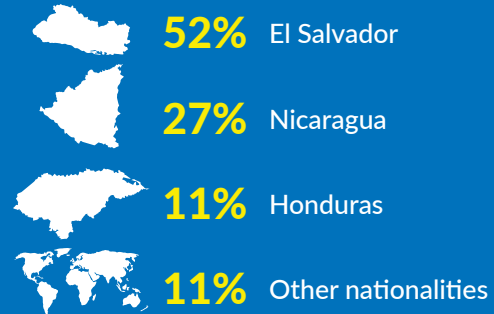
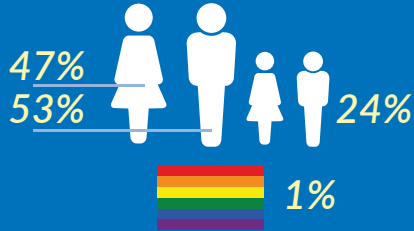


INTERNATIONAL PROTECTION OF REFUGEES IN GUATEMALA

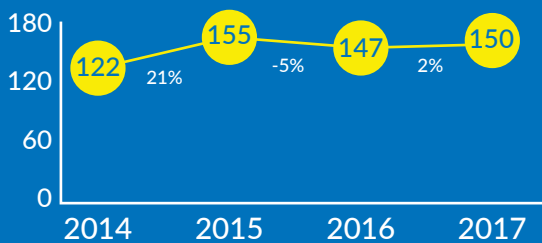
370 refugees in Guatemala by December of 2017



868

asylum claims from 41 different nationalities from 2002 to June 2017

Nuevas solicitudes



66% from the number of new asylum claims were made between 2014 to 2017

47% increase in the numbers of asylum claims submitted by Hondurans and Salvadorians in 2017 in comparison to previous year



CONARE

(National Commission for Refugees)



Average of **2 months** to complete the review on an asylum claim



225 persons recognized as refugees in Guatemala from 2014 to 2017

In 2017 eligibility rates for Hondurans was **43%** and **95%** for Salvadorians



In 2017 the number of asylum claims from children and adolescents increased **31%** in comparison to 2016. In 2017 from the total number of asylum claims from children and adolescents **60%** were recognized as refugees.



Non-detention policy of asylum seekers

GUATEMALA'S NATIONAL SAFE SPACES NETWORK



Works through **8 transit shelters and 12 information and assistance points** based in the main transit routes

Safe spaces managed by **six civil society organizations**, in partnership with UNHCR: Pastoral de Movilidad Humana, Misioneros Scalabrinianos, El Refugio de la Niñez, Asociación Lambda, la Oficina de Derechos Humanos del Arzobispado de Guatemala, Cruz Roja Guatemalteca

Services provided:

- Humanitarian Assistance
- Information on Asylum
- Referrals to Protection Mechanisms

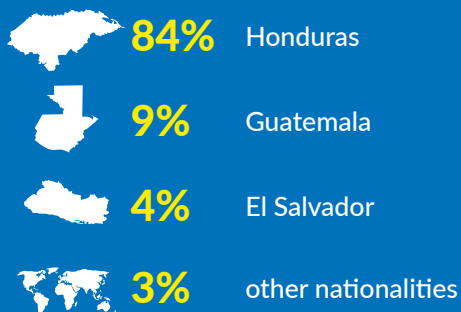
Of the total assisted population, **15%** was identified as having fled their countries of origin due to violence perpetrated by criminal gangs (93%), as well as domestic violence and sexual and gender-based violence.



+ 24,397 persons in transit assisted by the National Safe Spaces Network since its establishment

+ In 2017 the number of persons assisted by the National Safe Spaces increased **52%** in comparison to 2016.

Profile of assisted persons in transit



 **2,000** children and adolescents

 **100** LGBTI persons

 **25** is the most frequent age in people in transit



In 2017 the number of children in transit assisted by the National Safe Spaces increased **50%** in comparison to 2016. From the total number of children registered by the National Safe Spaces Network **60%** were unaccompanied children.



Main profile of persons in transit assisted with international protection needs.

70% Hondurans

8% Salvadorians

40% girls and adolescents

60% boys and adolescents



From the total number of children interviewed by the National Safe Spaces Network in 2017, **26%** were identified with international protection needs because they fled from violence for being victims of forced recruitment, sexual exploitation and human trafficking by criminal gangs



In 2017, the Safe Spaces Network increased the detection capacity for LGBTI persons to **50%** in comparison to 2016